

Establish everyday efficiency

Ultrasound system

HS40 Powered by CrystalLive™



Product Inquiry

Powered by CrystalLive™

CrystalLive™ is Samsung's up-to-date ultrasound imaging engine with enhanced 2D image processing and color signal processing, to offer outstanding image performance and efficient workflow during complex cases.

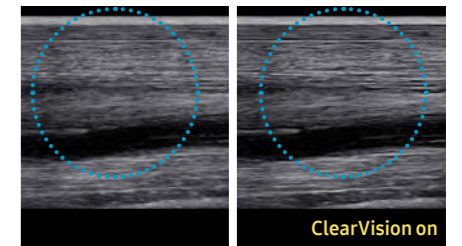


Extraordinary image quality for a clearer view

With the astonishingly clear view provided by Samsung's advanced imaging technologies, you can make clinical decisions with greater confidence.

Noise reduction filter to improve 2D image quality

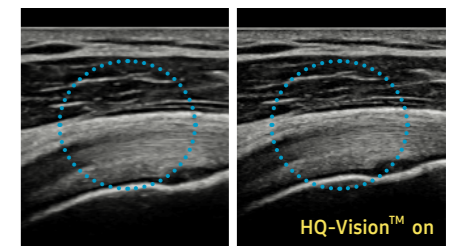
The noise reduction filter improves edge enhancement and creates sharper 2D images for optimal diagnostic performance. In addition, **ClearVision** provides application-specific optimization and advanced temporal resolution in live scan mode.



Suspensory ligament

Clarify blurred area to provide clearer images

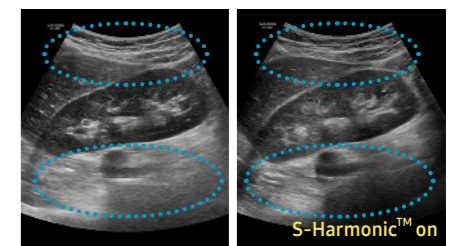
HQ-Vision™ provides clearer images by mitigating the characteristics of ultrasound images that are slightly blurred than the actual vision.



Shoulder

Uniform imaging performance of overall image area from near-to-far

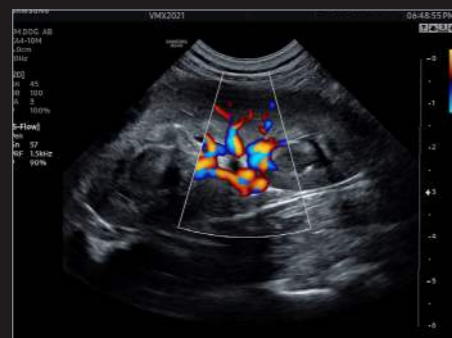
S-Harmonic™ mitigates the signal noise, enhances contrast, and provides uniform image performance of overall image area from near-to-far.



Kidney



Gall bladder



Kidney



Blood vessel



Abdomen (Foal pregnancy)



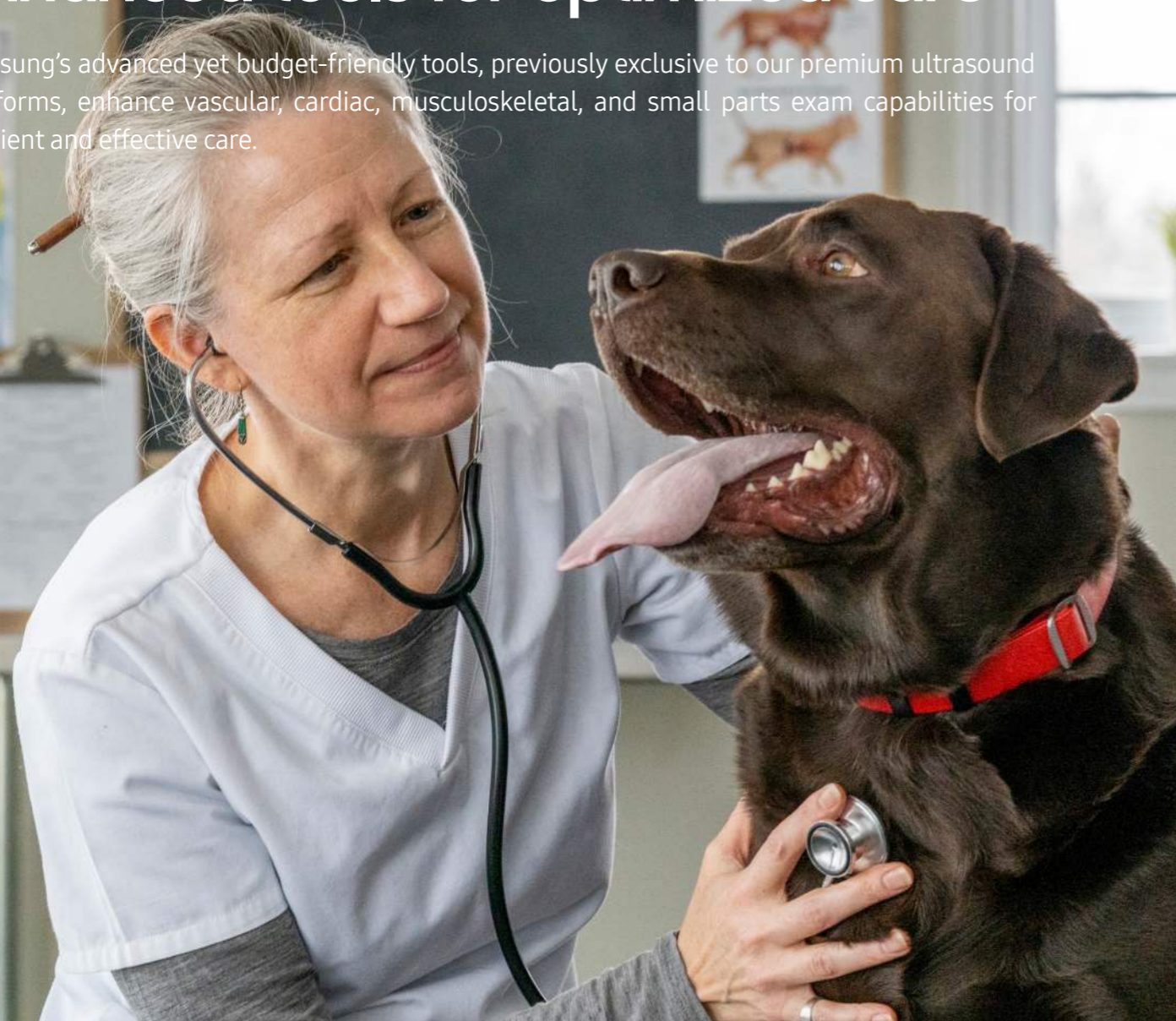
Limb vessel



Uterus

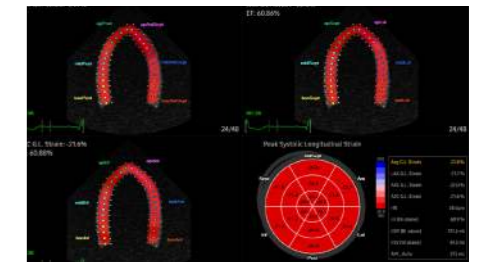
Enhanced tools for optimized care

Samsung's advanced yet budget-friendly tools, previously exclusive to our premium ultrasound platforms, enhance vascular, cardiac, musculoskeletal, and small parts exam capabilities for efficient and effective care.



Quantitative tool for measuring wall motion of the left ventricle

Strain+ is a quantitative tool for global and segmental wall motion of the left ventricle (LV). In Strain+, three standard LV views and a Bull's Eye are displayed in a quad screen for easy and quick assessment of the LV-function.



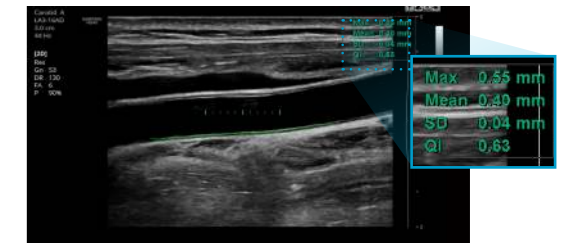
Strain+

Wall motion scoring and reporting tool to determine heart and blood vessel function

The StressEcho package includes wall motion scoring and reporting. It includes exercise **StressEcho**¹, pharmacologic StressEcho, diastolic StressEcho and user-programmable StressEcho.

Measure ejection fraction of the left ventricle

AutoIMT+ is a screening tool to analyze a potential risk of cardiovascular disease. It allows easy intima-media thickness measurement of both the anterior and posterior wall of the common carotid by the click of a button.



CCA with AutoIMT+

Display needle tip clearly

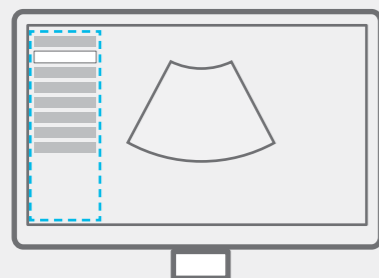
With pinpoint precision, **NeedleMate+™** delineates needle location when performing interventions such as nerve blocks. Improved accuracy and efficiency in procedure are possible with beam steering added to NeedleMate+™.



NeedleMate+™ (Phantom)

Build predefined protocols for streamlined process

EzExam+™ enables you to build or use a predefined protocol, and assign protocols for examinations that are regularly performed in the hospital in order to reduce the number of steps that you have to go through.



Compare previous and current exam in a side-by-side display

EzCompare™ automatically matches the image settings, annotations, and bodymarkers from the prior study.



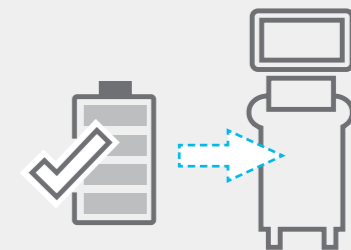
Select transducer and preset combinations in one click

With one touch, the user can select the most common transducer and preset combinations. **QuickPreset** maximizes efficiency to make a full day of scanning simple and easy.



Use the system when AC power is temporarily unavailable

BatteryAssist™ provides battery power to the system, enabling users to perform scans when AC power is temporarily unavailable.



User-friendly design

HS40's ground-breaking design was inspired by users' ideas and suggestions during development. Every detail, such as the fully articulating monitor arm, the operating panel which can be easily adjusted to different heights, and additional storage space, has been created to make the work environment more comfortable. And it is this focus on the user that has led to the product winning a prestigious 2017 iF Design Award.



Solid State Drive (SSD)

The HS40 uses advanced solid state drives. These stable and dependable drives allow faster boot-up, better frame rates, and fast processing speeds.

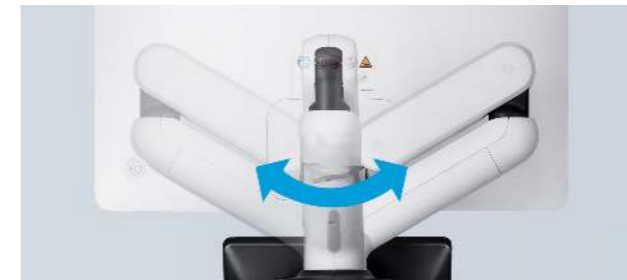


BatteryAssist™¹

BatteryAssist™ provides the system with battery power. It enables users to perform scans and transport the ultrasound system to other locations in environments where AC power may not be available temporarily.

Articulating monitor arm

With a wide range of motion, the fully articulating monitor arm adapts to your changing needs.



Height-adjustable operating panel

Adjust the operating panel to your preferred height without straining, thanks to the smooth upward and downward motion of the gas lift.



Rear tray¹

HS40's rear tray provides extra storage space for the endocavity transducer and other items.



Gel warmer¹

Two-level adjustable gel warmer maintains ultrasound gel at a comfortable temperature.



Side storage¹

The side storage is ideal for storing a tablet, charts, or other items that you need to keep close at hand.



Samsung Healthcare Cybersecurity

To address this emerging need for cybersecurity, Samsung provides a solution to support our customers by offering the tools to protect against cyberthreats that may compromise invaluable data and ultimately degrade the quality of care.



Intrusion Prevention



Access Control



Data Protection

Comprehensive selection of transducers

Curved array transducers



CA1-7AD
Pediatric, Vascular,
Abdomen, Obstetrics,
Gynecology, Urology,
Musculoskeletal



CA2-8AD
Abdomen, Obstetrics,
Gynecology, Pediatric,
Musculoskeletal,
Vascular, Urology



C2-8
Abdomen, Obstetrics,
Gynecology, Pediatric,
Musculoskeletal,
Vascular, Urology



C2-5
Abdomen, Obstetrics,
Gynecology, Pediatric,
Musculoskeletal,
Vascular, Urology



CA4-10M *
Pediatric, Vascular,
Abdomen, Cardiac,
Obstetrics, Gynecology,
Musculoskeletal, Urology,
Vet Cardiac, Vet Abdomen

Linear array transducers



LA2-9S *
Musculoskeletal,
Abdomen, Small Parts,
Vascular, Obstetrics,
Gynecology, Pediatric



LA3-16AD
Small Parts, Vascular,
Musculoskeletal,
Abdomen, Obstetrics,
Gynecology, Pediatric,
Vet Abdomen



LN5-12
Small Parts, Vascular,
Musculoskeletal,
Abdomen, Obstetrics,
Gynecology, Pediatric



L5-12/50
Small Parts, Vascular,
Musculoskeletal,
Abdomen, Obstetrics,
Gynecology, Pediatric



LA2-9R Vet **
Musculoskeletal,
Reproduction



LS6-15
Musculoskeletal,
Abdomen, Small Parts,
Vascular, Obstetrics,
Gynecology, Pediatric

Phased array transducers



PA1-5A *
Abdomen, Cardiac,
Vascular, Pediatric



PA3-9B
Abdomen, Cardiac,
Vascular, Pediatric



PN2-4
Abdomen, Cardiac,
Vascular, Pediatric



SP3-8
Abdomen, Pediatric,
Cardiac, Vascular

* Ergonomic transducers

The new transducer supports natural grip by moving the max-width point to a more forward position and also increasing the length of the grip to allow balanced weight distribution.



Cleaning and
disinfection guide

** Equine dedicated transducer

* This product, features, options, and transducers may not be commercially available in some countries.

* Sales and Shipments are effective only after the approval by the regulatory affairs.
Please contact your local sales representative for further details.

* Some of the ultrasound images in this catalog are acquired with the human body.

* S-Vue Transducer™ is the name of Samsung's advanced transducer technology.

* This product is a medical device, please read the user manual carefully before use.

1. Optional feature which may require additional purchase.

SAMSUNG MEDISON CO., LTD.

© 2023 Samsung Medison All Rights Reserved.

Samsung Medison reserves the right to modify the design, packaging, specifications, and features shown herein, without prior notice or obligation.

CE 0123

CT-HS40.V1.05-VET-230313-EN